

# Pre-enrol your child

For the 2020–21 school year

*Where is your child going to school next year? Whether they're staying at the same school or changing schools, all students need to pre-enrol. Knowing how many students to expect helps schools prepare to welcome them in September.*



## Your options

### Select your child's designated school

Every home address has a designated public school, but it isn't always the one closest to where you live. Visit [epsb.ca/fast](https://www.edmontonpublicschools.ca/fast) and talk to your child's school to find your designated elementary, junior high or high school.



### Choose to continue at the same school

If your child is continuing at the same school or program, you still need to pre-enrol.



### Select any other Division school

The school must have available space, and your child must meet the school's entrance criteria (if applicable).



## Sign in to SchoolZone by April 15

What to do	How	When
Visit <a href="https://schoolzone.edmontonpublicschools.ca">schoolzone.edmontonpublicschools.ca</a> to sign in to your parent account.	→ Choose <i>Next Year</i> and select the name of the child you are pre-enrolling. Follow the instructions to complete pre-enrolment.	→ Pre-enrol between 9 a.m. on March 9 and 4 p.m. on April 15, 2020.



### Course selection is NOT part of selecting your preferred school in SchoolZone.

Junior high and high school students will choose specific courses (e.g., fine arts, career and technology studies) through a separate process at their current school.

## Registering new students

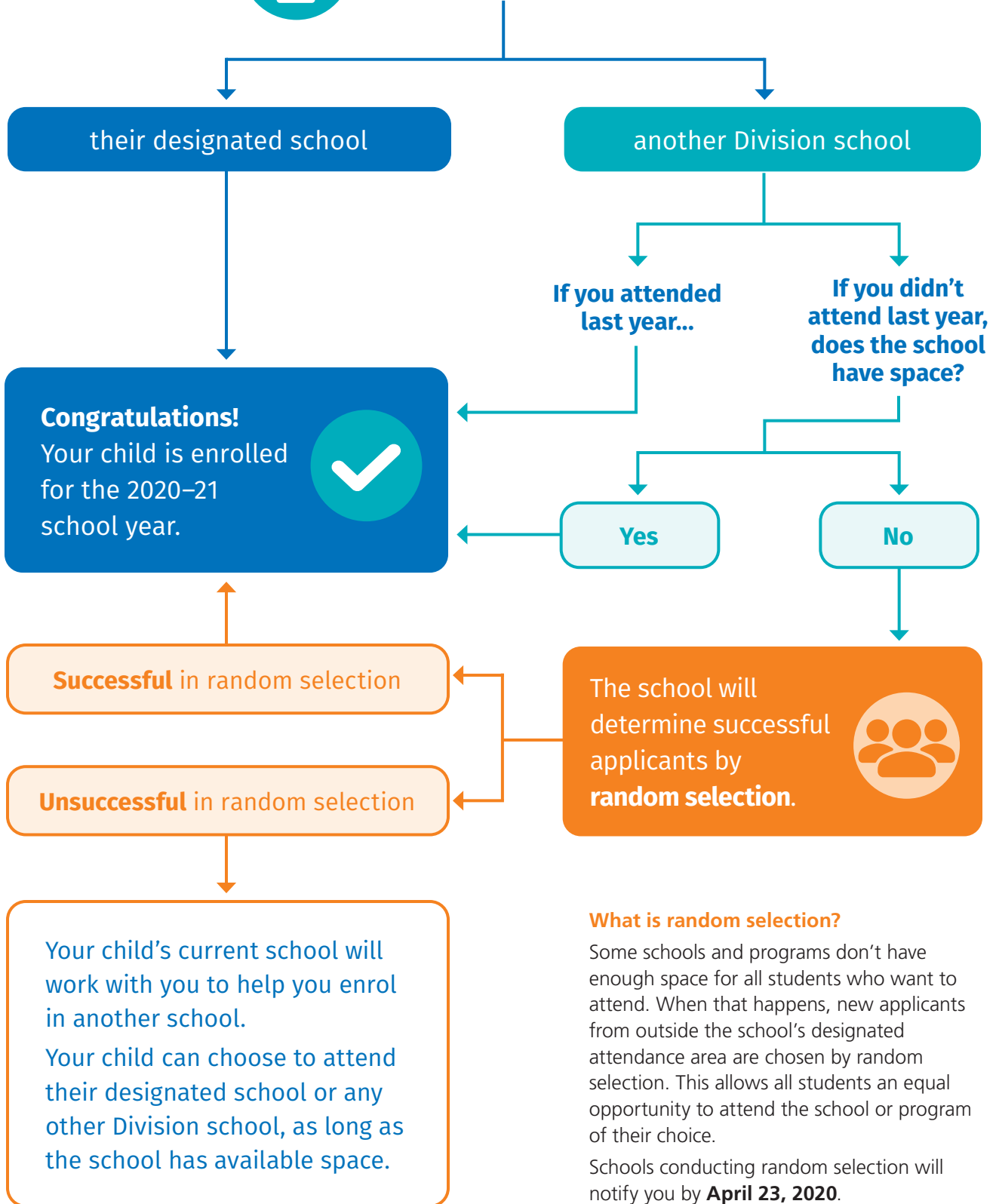
Instead of using SchoolZone, students who are **new to Edmonton Public Schools** need to submit a completed Student Registration form.

Find the form and a list of documents we need to confirm your address and your child's legal name at [epsb.ca/schools/register/newstudentregistration](https://www.edmontonpublicschools.ca/schools/register/newstudentregistration).

# What happens after pre-enrolment?



Using SchoolZone,  
you pre-enrolled your child at:



## What is random selection?

Some schools and programs don't have enough space for all students who want to attend. When that happens, new applicants from outside the school's designated attendance area are chosen by random selection. This allows all students an equal opportunity to attend the school or program of their choice.

Schools conducting random selection will notify you by **April 23, 2020**.